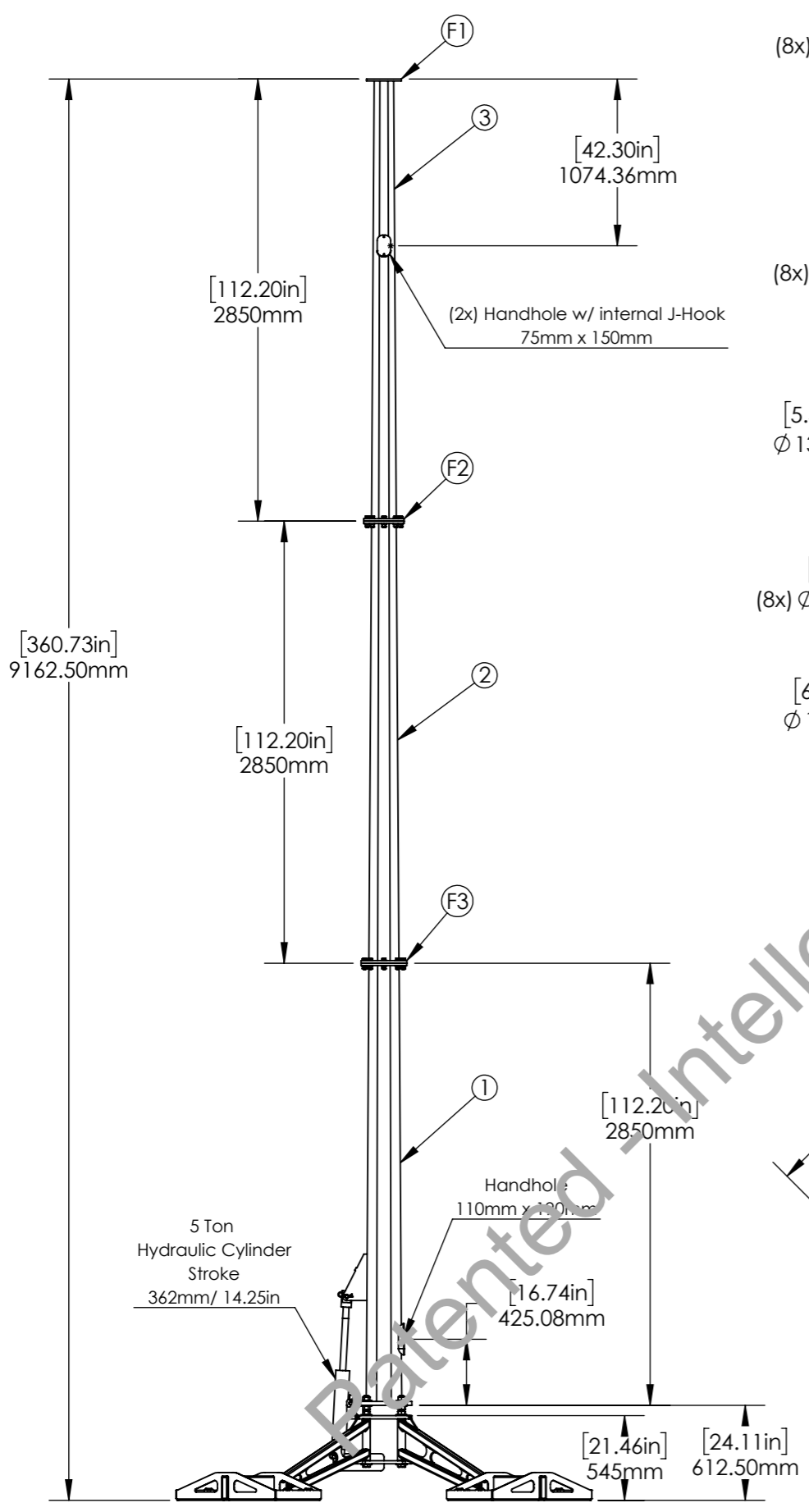


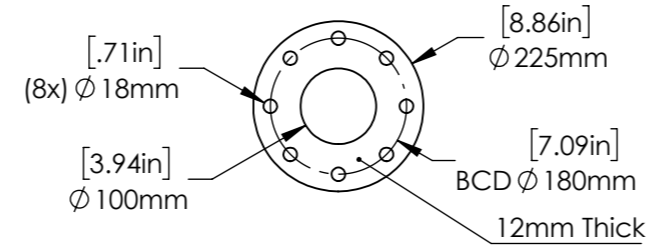
Proprietary rights are included in the information disclosed herein. This information is submitted in confidence and neither the document nor the information disclosed herein shall be reproduced or transferred to other documents for manufacturing or for any other purpose except as specifically authorized in writing by ARE Telecom & Wind.

REVISIONS			
REV.	DESCRIPTION	DATE	APPROVED
A	initial release	1/12/21	MGC
B			

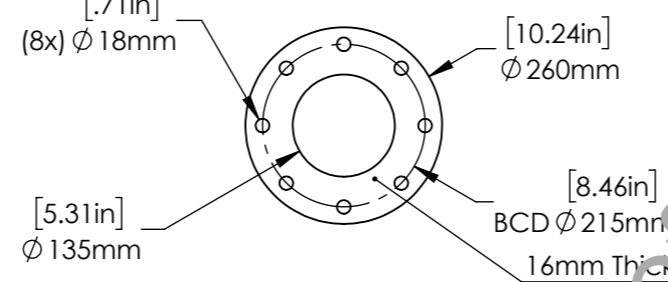
A
B
C
D
E
F



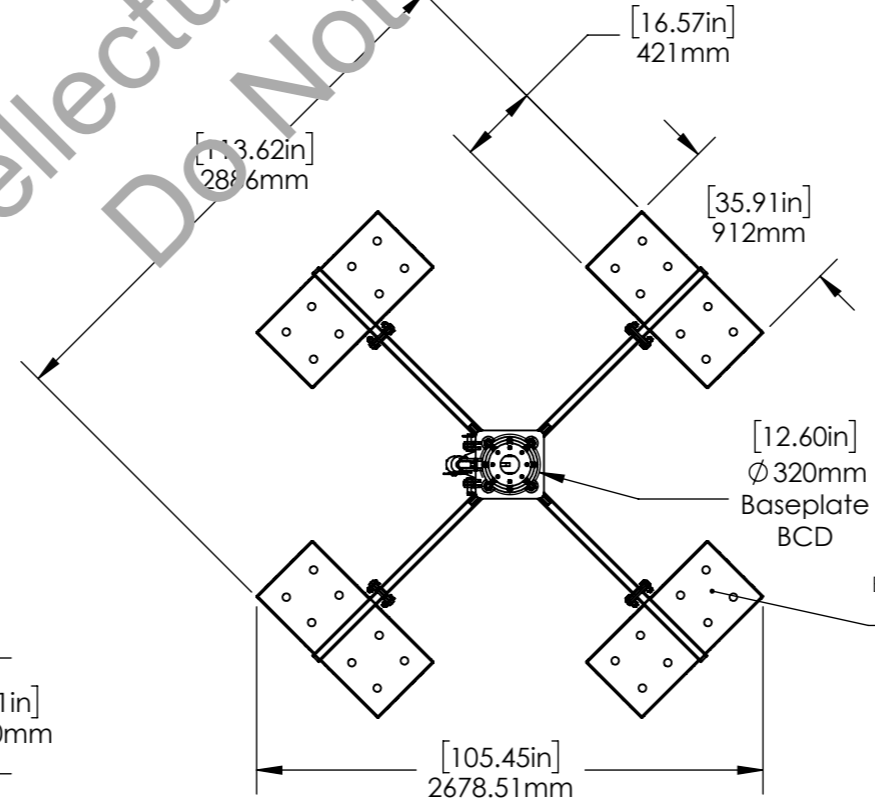
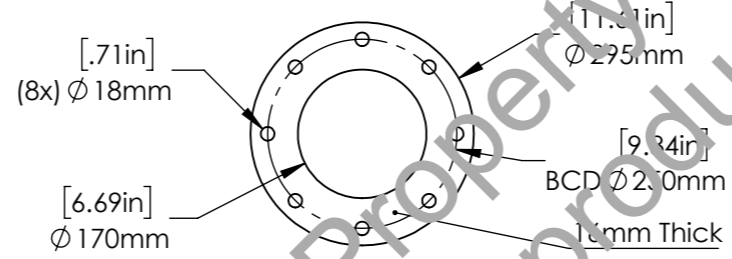
Flange 1.



Flange 2.



Flange 3.



- Survival Wind Speed: 49.2 m/s (110 mph) - (3 sec gust)
 - Class II
 - Top 1
 - Exposure C
- Design and Welding Codes:
 - IA-222-G
 - Eurocode 3, 1-9
 - AWS D1.1
- Material
 - Pole: Q355B (ASTM A572 GR50)
 - Baseplate: Q355B (ASTM A572 GR50)
 - Splice Plates/ Flanges: Q355B (ASTM A572 GR50)
- Deflection: <2% at 27 m/s
- Pole has 8 sides
- Finish: Hot dip Galvanizing per ASTM A123
- Anchor Bolts: (4X) M24x3 x 445mm (150mm thread length)
 - Grade 8.8 w/ (3x) nuts & (4x) washers ea.
 - (Optional) ASTM F1554 GR55
 - BCD 320mm/ 12.6in
- Flange/ Tray Bolts: (40x) M16x2 x 60mm
 - Grade 8.8 w/ nut and (2x) washer ea.
 - (Optional) 5/8-11 x 2.5" A325

9. Pole Section Details

Pole Section	#1	#2	#3
Thickness (mm)/ (in)	4/ 0.158	4/ 0.158	4/ 0.158
Length (m)/ (ft)	2.850/ 9.35	2.85/ 9.35	2.85/ 9.35
Top Dia. (mm)/ (in)	195/ 7.68	160/ 6.3	125/ 4.9
Bottom Dia. (mm)/ (in)	230/ 9.1	194.5/ 7.66	159.5/ 6.28
Design Slip Fit (mm)/ (in)	NA	NA	
Weight (kg)/ (lb)	95/ 209	61/ 134	49/108

Ballast Requirements:

- Concrete Pavers 407mm x 407mm x 50mm (16" x 16" x 2")
- Minimum Weight per Tray 227kg (500lb)
- Minimum Ultimate Bearing Pressure 144kPa (3000psf)

CAD-generated drawing do not manually update		1041 Grand Ave., #213 St Paul, MN 55105 (651) 330 1263	
APPROVALS	DATE	AFS130 9m 3SF 5t Hyd/ Jack	
DRAWN MGC	1/12/21		
CHECKED			
MATERIAL See Notes	RESP ENG	CAD file:	
FINISH See Notes	MFG ENG	Details and dimensions not shown on this drawing can be found in CAD file.	
DO NOT SCALE DRAWING	QUAL ENG	scale NA	rev. A size NA sheet 1 of 2